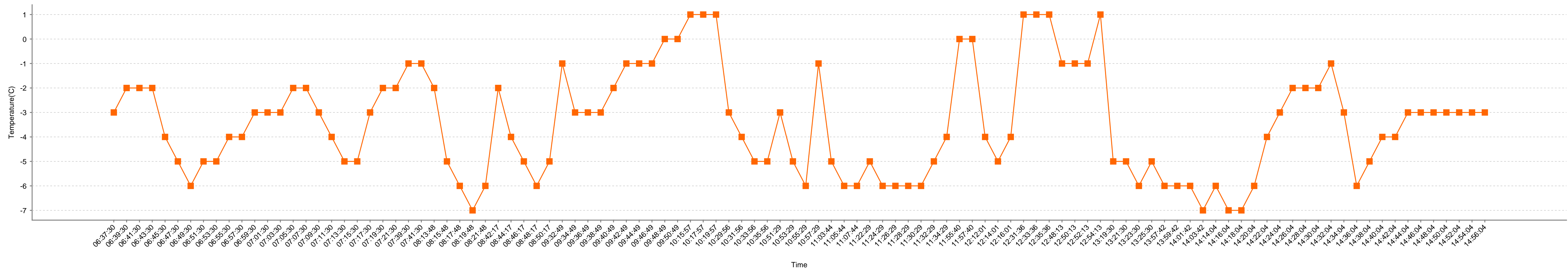


Snow Cap Enterprises Ltd - Temperature Sensor Report for 24-Jan-2020



Asset	Time	Address	Temperature(°C)
Trailer 17	06:37:30	307 Marine Way, Burnaby, BC V3N 2T8, Canada	-3
Trailer 17	06:39:30	350 McGillivray Pl, New Westminster, BC V3M 6R7, Canada	-2
Trailer 17	06:41:30	787 Cliveden Pl, Delta, BC V3M 6C7, Canada	-2
Trailer 17	06:43:30	8238 Swenson Way, Delta, BC V4G 1J6, Canada	-2
Trailer 17	06:45:30	Annacis Hwy, Delta, BC V4E 1B9, Canada	-4
Trailer 17	06:47:30	Annacis Hwy, Delta, BC V4K 3N3, Canada	-5
Trailer 17	06:49:30	5671 Fairlight Crescent, Delta, BC V4E 1B3, Canada	-6
Trailer 17	06:51:30	12266 58a Ave, Surrey, BC V3X 3L8, Canada	-5
Trailer 17	06:53:30	5785 133 St, Surrey, BC V3X 2T4, Canada	-5
Trailer 17	06:55:30	BC-10, Surrey, BC V3X 3A1, Canada	-4
Trailer 17	06:57:30	14733 56 Ave, Surrey, BC V3S 6K8, Canada	-4
Trailer 17	06:59:30	15150-15184 56 Ave, Surrey, BC V3S 1B8, Canada	-3
Trailer 17	07:01:30	16010 56 Ave, Surrey, BC V3S 2J7, Canada	-3
Trailer 17	07:03:30	17079 56 Ave, Surrey, BC V3S, Canada	-3

Snow Cap Enterprises Ltd - Temperature Sensor Report for 24-Jan-2020

Asset	Time	Address	Temperature(°C)
Trailer 17	07:05:30	17700-17708 56 Ave, Surrey, BC V3S, Canada	-2
Trailer 17	07:07:30	Hwy 10 FS 184 St, Surrey, BC V3S, Canada	-2
Trailer 17	07:09:30	950 56 Ave, Surrey, BC V3S 8E5, Canada	-3
Trailer 17	07:11:30	4725 192 St, Surrey, BC V3S 0L5, Canada	-4
Trailer 17	07:13:30	3733 192 St, Surrey, BC V3S 0L5, Canada	-5
Trailer 17	07:15:30	3106 192 St, Surrey, BC V3S 9V2, Canada	-5
Trailer 17	07:17:30	2711 192 St, Surrey, BC V3S 3X1, Canada	-3
Trailer 17	07:19:30	2711 192 St, Surrey, BC V3S 3X1, Canada	-2
Trailer 17	07:21:30	2711 192 St, Surrey, BC V3S 3X1, Canada	-2
Trailer 17	07:39:30	213, 19138 26 Ave, Surrey, BC V3Z 3V7, Canada	-1
Trailer 17	07:41:30	213, 19138 26 Ave, Surrey, BC V3Z 3V7, Canada	-1
Trailer 17	08:13:48	19183 16 Ave, Surrey, BC V3S 9V2, Canada	-2
Trailer 17	08:15:48	1347 Perimeter Trail, Langley City, BC V2Z 1Z4, Canada	-5
Trailer 17	08:17:48	2410 200 St, Langley City, BC V2Z 1W9, Canada	-6
Trailer 17	08:19:48	2410 200 St, Langley City, BC V2Z 1W9, Canada	-7
Trailer 17	08:21:48	2426 200 St, Langley City, BC V2Z 1X1, Canada	-6
Trailer 17	08:42:17	200 St FS 32 Ave, Langley Twp, BC, Canada	-2
Trailer 17	08:44:17	3833 200 St, Langley City, BC V3A 1K4, Canada	-4
Trailer 17	08:46:17	199 199A Cres, Langley City, BC V3A 6G2, Canada	-5
Trailer 17	08:48:17	4121 200 St, Langley City, BC V3A 1K8, Canada	-6
Trailer 17	08:50:17	4121 200 St, Langley City, BC V3A 1K8, Canada	-5
Trailer 17	09:32:49	4920 200 St, Langley City, BC V3A 1L5, Canada	-1
Trailer 17	09:34:49	Southbound 200 St @ 56 Ave, Langley City, BC V3A 3X9, Canada	-3
Trailer 17	09:36:49	6070 200 St, Langley City, BC V3A 1N4, Canada	-3
Trailer 17	09:38:49	20575 BC-10, Langley City, BC V3A 5E8, Canada	-3
Trailer 17	09:40:49	20894 57 Ave, Langley City, BC V3A 8M7, Canada	-2
Trailer 17	09:42:49	21559 Fraser Hwy, Langley City, BC V3A 4M6, Canada	-1

Snow Cap Enterprises Ltd - Temperature Sensor Report for 24-Jan-2020

Asset	Time	Address	Temperature(°C)
Trailer 17	09:44:49	Fraser Hwy FS 216 St, Langley Twp, BC V3A, Canada	-1
Trailer 17	09:46:49	22260 48 Ave, Langley City, BC V3A 3N5, Canada	-1
Trailer 17	09:48:49	103 49 Ave, Langley City, BC V3A 8T1, Canada	0
Trailer 17	09:50:49	22323 48 Ave, Langley City, BC V3A 0C1, Canada	0
Trailer 17	10:15:57	22652 Fraser Hwy, Langley City, BC V2Z 2T5, Canada	1
Trailer 17	10:17:57	22652 Fraser Hwy, Langley City, BC V2Z 2T5, Canada	1
Trailer 17	10:19:57	22652 Fraser Hwy, Langley City, BC V2Z 2T5, Canada	1
Trailer 17	10:29:56	Westbound Fraser Hwy @ 221 St, Langley Twp, BC V3A 8P8, Canada	-3
Trailer 17	10:31:56	22065 52 Ave, Langley City, BC V2Y, Canada	-4
Trailer 17	10:33:56	22061 52 Ave, Langley City, BC V2Y, Canada	-5
Trailer 17	10:35:56	22059 52 Ave, Langley City, BC V2Y, Canada	-5
Trailer 17	10:51:29	105 Fraser Hwy, Langley City, BC V3A 4G9, Canada	-3
Trailer 17	10:53:29	21667 48 Ave, Langley City, BC V3A 3M7, Canada	-5
Trailer 17	10:55:29	4822 Johnston Townline Rd, Langley City, BC V3A 2M7, Canada	-6
Trailer 17	10:57:29	4822 Johnston Townline Rd, Langley City, BC V3A 2M7, Canada	-1
Trailer 17	11:03:44	21065-21083 48 Avenue, Langley, BC V3A, Canada	-5
Trailer 17	11:05:44	21025 48 Ave, Langley City, BC V3A 4A1, Canada	-6
Trailer 17	11:07:44	21025 48 Ave, Langley City, BC V3A 4A1, Canada	-6
Trailer 17	11:22:29	5311 208 St, Langley City, BC V3A 4C2, Canada	-5
Trailer 17	11:24:29	20966 56 Ave, Langley City, BC V3A 7Z2, Canada	-6
Trailer 17	11:26:29	20710 Langley Bypass, Langley, BC V3A 0A3, Canada	-6
Trailer 17	11:28:29	20801 Langley Bypass, Langley City, BC V3A 5E8, Canada	-6
Trailer 17	11:30:29	20771 BC-10, Langley City, BC V3A 5E8, Canada	-6
Trailer 17	11:32:29	20771 BC-10, Langley City, BC V3A 5E8, Canada	-5
Trailer 17	11:34:29	20771 Langley Bypass, Langley City, BC V3A 5E8, Canada	-4
Trailer 17	11:55:40	20560 Langley Bypass, Langley City, BC V3A 6K8, Canada	0
Trailer 17	11:57:40	20560 Langley Bypass, Langley City, BC V3A 6K8, Canada	0

Snow Cap Enterprises Ltd - Temperature Sensor Report for 24-Jan-2020

Asset	Time	Address	Temperature(°C)
Trailer 17	12:12:01	20363 62 Ave, Langley City, BC V3A 5E6, Canada	-4
Trailer 17	12:14:01	20243 62 Ave, Langley City, BC V3A 7Y4, Canada	-5
Trailer 17	12:16:01	20243 62 Ave, Langley City, BC V3A 5E6, Canada	-4
Trailer 17	12:31:36	20338 65 Ave, Langley City, BC V2Y, Canada	1
Trailer 17	12:33:36	20338 65 Ave, Langley City, BC V2Y, Canada	1
Trailer 17	12:35:36	20353 64 Ave, Langley City, BC V2Y 1N5, Canada	1
Trailer 17	12:48:13	200 St FS 64 Ave, Langley Twp, BC V2Y, Canada	-1
Trailer 17	12:50:13	240-7150 200 St, Langley City, BC V2Y 3B9, Canada	-1
Trailer 17	12:52:13	7150 200 St, Langley City, BC V2Y 3B9, Canada	-1
Trailer 17	12:54:13	7150 200 St, Langley City, BC V2Y 3B9, Canada	1
Trailer 17	13:19:30	6651 203 St #12, Langley City, BC V2Y 2Z2, Canada	-5
Trailer 17	13:21:30	Westbound 64 Ave @ 204 St, Langley Twp, BC V2Y 1N5, Canada	-5
Trailer 17	13:23:30	20381 62 Ave, Langley City, BC V3A 5E6, Canada	-6
Trailer 17	13:25:30	20381 62 Ave, Langley City, BC V3A 5E6, Canada	-5
Trailer 17	13:57:42	20207 Langley Bypass, Langley, BC V3A, Canada	-6
Trailer 17	13:59:42	8 Langley Bypass, Langley City, BC V3A 4E1, Canada	-6
Trailer 17	14:01:42	19712 Fraser Hwy, Langley City, BC V3A 4C7, Canada	-6
Trailer 17	14:03:42	19712 Fraser Hwy, Langley City, BC V3A 4C7, Canada	-7
Trailer 17	14:14:04	19060 56 Ave, Surrey, BC V3S 4N7, Canada	-6
Trailer 17	14:16:04	94 56 Ave, Surrey, BC V3S 7Z2, Canada	-7
Trailer 17	14:18:04	17789 56 Ave, Surrey, BC V3S 1E2, Canada	-7
Trailer 17	14:20:04	17395 56 Ave, Surrey, BC V3S, Canada	-6
Trailer 17	14:22:04	16212 56 Ave, Surrey, BC V3S 2J7, Canada	-4
Trailer 17	14:24:04	15350 56 Ave, Surrey, BC V3S 5K7, Canada	-3
Trailer 17	14:26:04	14952 56 Ave, Surrey, BC V3S 2N5, Canada	-2
Trailer 17	14:28:04	14179 56 Ave, Surrey, BC V3X 2W7, Canada	-2
Trailer 17	14:30:04	13987 56 Ave, Surrey, BC V3X 2Z9, Canada	-2

Snow Cap Enterprises Ltd - Temperature Sensor Report for 24-Jan-2020

Asset	Time	Address	Temperature(°C)
Trailer 17	14:32:04	12 BC-10, Surrey, BC V3X 2P8, Canada	-1
Trailer 17	14:34:04	5798 Abbey Dr, Delta, BC V4E 2K6, Canada	-3
Trailer 17	14:36:04	BC-91, Delta, BC, Canada	-6
Trailer 17	14:38:04	Annacis Hwy, Delta, BC V4K, Canada	-5
Trailer 17	14:40:04	Alex Fraser Bridge, Delta, BC, Canada	-4
Trailer 17	14:42:04	4391 Thompson Rd, Richmond, BC V6V 1S9, Canada	-4
Trailer 17	14:44:04	NB Hwy 91A Onramp at Howes St, New Westminster, BC V3M 5L8, Canada	-3
Trailer 17	14:46:04	409 Wood St, New Westminster, BC V3M 6L5, Canada	-3
Trailer 17	14:48:04	6151 Thorne Ave, Burnaby, BC V3N 2T8, Canada	-3
Trailer 17	14:50:04	156 Marine Way, Burnaby, BC V3N 2T8, Canada	-3
Trailer 17	14:52:04	8165 Glenwood Dr, Burnaby, BC V3N 5C8, Canada	-3
Trailer 17	14:54:04	5698 Trapp Ave, Burnaby, BC V3N 5G4, Canada	-3
Trailer 17	14:56:04	5698 Trapp Ave, Burnaby, BC V3N 5G4, Canada	-3