

Snapshot:

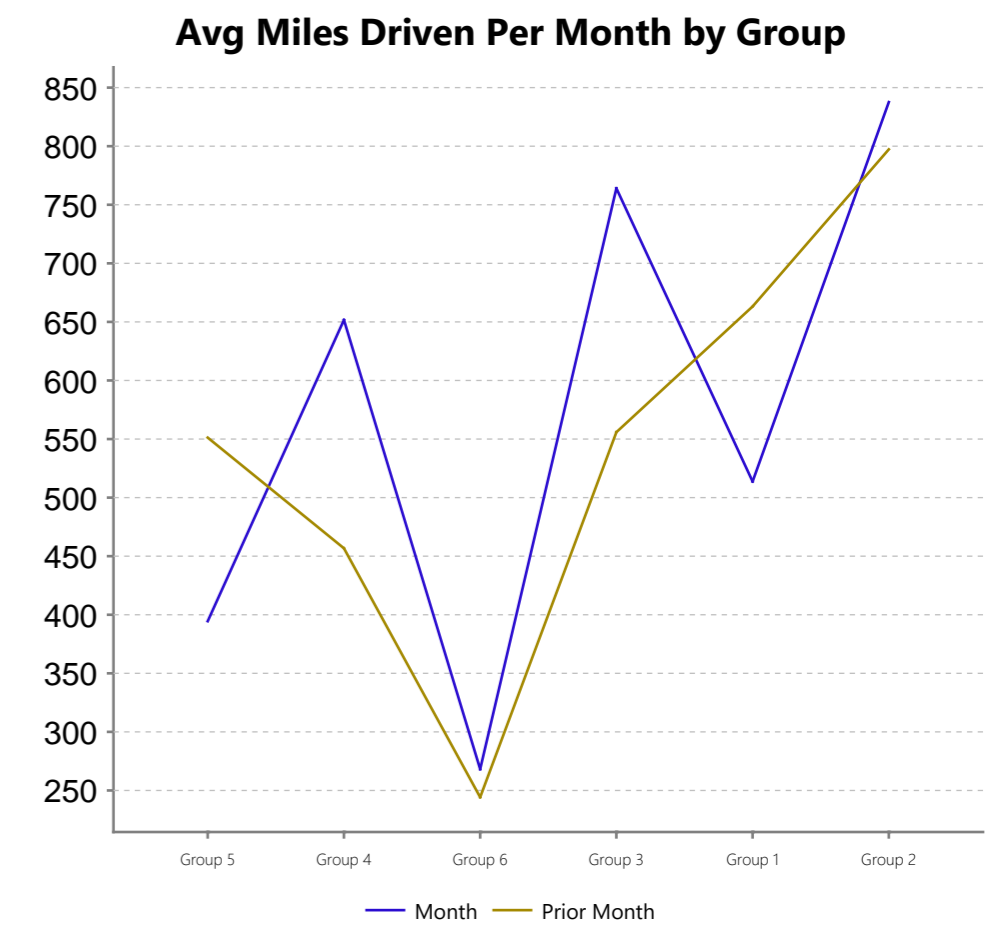
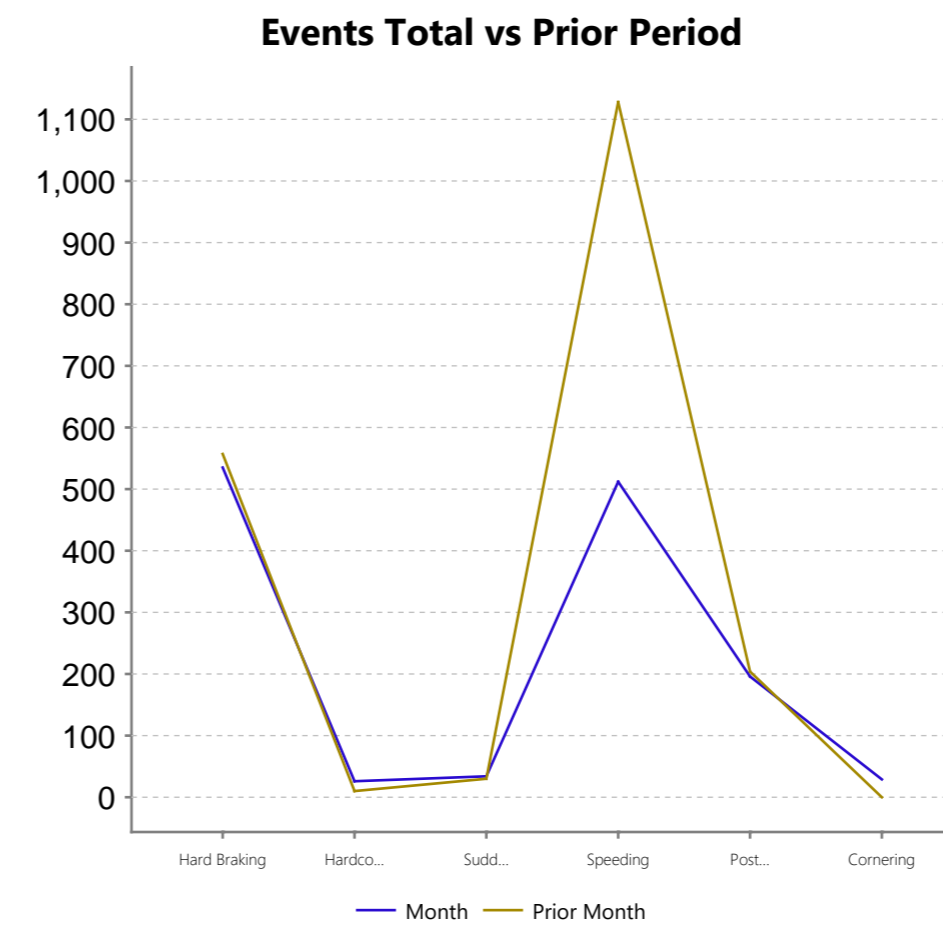
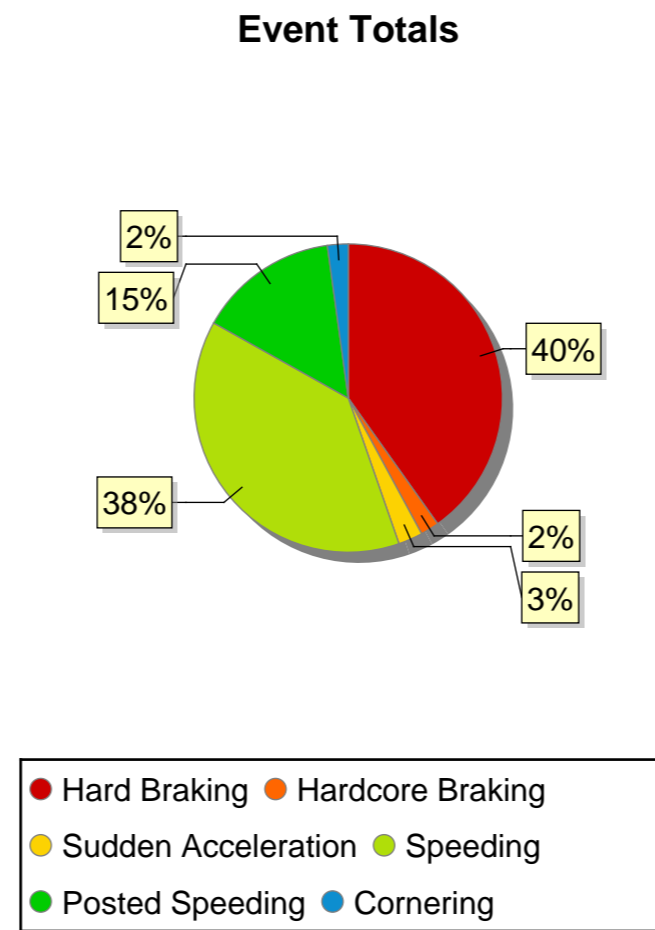
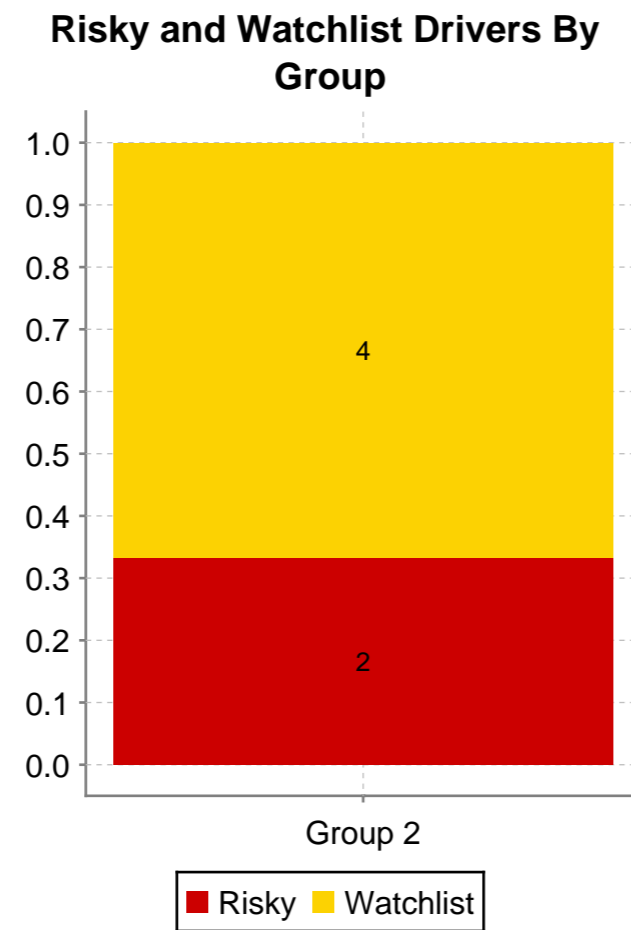
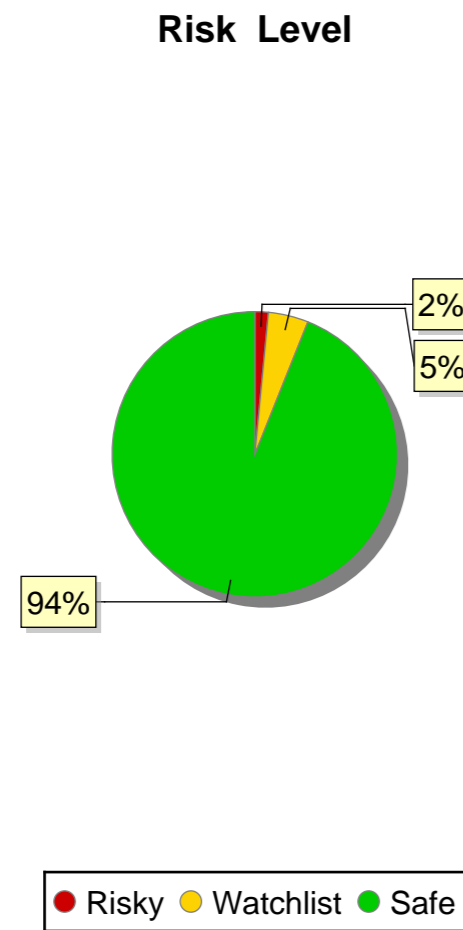
Compliance - Progress & Trends	
Most Improved:	Speeding
Least Improved:	Cornering
Highest Events Total	Hard Braking

	This Period	Last Period	% +/-
Top Speed:	112	102	9
Avg Speed:	37	24	54
Avg Driver Score:	85	85	0
Lowest Score:	58	66	-12
Total # of Events:	1,303	1,929	-32

Coaching - Highest Risk		
Driver	Group	Score
Driver 66	Group 5	73
Driver 67	Group 2	72
Driver 68	Group 2	70
Driver 69	Group 2	63
Driver 70	Group 5	58

Rewards - Lowest Risk		
Driver	Group	Score
Driver 1	Group 2	93
Driver 2	Group 3	92
Driver 3	Group 3	92
Driver 4	Group 3	92
Driver 5	Group 2	91

Vehicle	Driver	Group	Region	Score	Peak Speed	HB #	HCB #	SA #	Speed #	PSL #	Total Events	Distance Travelled	Average Miles Per Day	Events per 100 Miles	Risk Level
Vehicle 1	Driver 1	Group 2	Region 1	93	58	0	0	0	0	0	0	820.64	32.83	0	Safe
Vehicle 2	Driver 2	Group 3	Region 1	92	93	3	0	0	1	0	4	395.63	131.88	1	Safe
Vehicle 3	Driver 3	Group 3	Region 1	92	70	0	0	0	0	0	0	845	27.26	0	Safe



Vehicle	Driver	Group	Region	Score	Peak Speed	HB #	HCB #	SA #	Speed #	PSL #	Total Events	Distance Travelled	Average Miles Per Day	Events per 100 Miles	Risk Level
Vehicle 4	Driver 4	Group 3	Region 1	92	78	3	0	0	0	0	3	860.16	35.84	0.3	Safe
Vehicle 5	Driver 5	Group 2	Region 1	91	76	1	0	0	0	0	1	1,028.18	34.27	0.1	Safe
Vehicle 6	Driver 6	Group 2	Region 1	91	83	0	0	0	0	0	0	168.08	30.45	0	Safe
Vehicle 7	Driver 7	Group 2	Region 1	91	92	1	0	0	0	0	1	338.59	30.45	0.3	Safe
Vehicle 8	Driver 8	Group 2	Region 1	91	84	1	0	0	0	0	1	406.94	30.45	0.2	Safe
Vehicle 9	Driver 9	Group 4	Region 1	91	71	0	0	0	0	0	0	336.72	12.03	0	Safe
Vehicle 10	Driver 10	Group 2	Region 1	91	83	4	0	0	0	0	4	1,222.17	39.42	0.3	Safe
Vehicle 11	Driver 11	Group 2	Region 1	91	72	2	0	0	0	0	2	832.08	29.72	0.2	Safe
Vehicle 12	Driver 12	Group 2	Region 1	91	75	0	0	0	0	0	0	375.87	16.34	0	Safe
Vehicle 13	Driver 13	Group 1	Region 2	91	47	0	0	0	0	0	0	37.16	9.38	0	Safe
Vehicle 14	Driver 14	Group 1	Region 2	91	47	0	0	0	0	0	0	150.43	9.38	0	Safe
Vehicle 15	Driver 15	Group 2	Region 1	91	82	2	0	0	2	8	12	1,506.33	48.59	0.8	Safe
Vehicle 16	Driver 16	Group 2	Region 1	91	67	2	0	0	0	0	2	922.8	30.76	0.2	Safe
Vehicle 17	Driver 17	Group 2	Region 1	90	88	3	0	0	5	5	13	1,018.24	33.94	1.3	Safe
Vehicle 18	Driver 18	Group 4	Region 1	90	80	8	0	1	2	0	11	1,742.76	72.61	0.6	Safe
Vehicle 19	Driver 19	Group 2	Region 1	90	76	4	0	0	0	0	4	1,025.88	33.09	0.4	Safe
Vehicle 20	Driver 20	Group 2	Region 1	90	75	1	1	0	0	0	2	642.06	24.69	0.3	Safe
Vehicle 21	Driver 21	Group 4	Region 1	90	78	2	0	0	0	0	2	646.29	21.54	0.3	Safe
Vehicle 22	Driver 22	Group 1	Region 2	90	73	0	0	0	0	0	0	342.87	14.29	0	Safe
Vehicle 23	Driver 23	Group 4	Region 1	90	73	1	0	0	0	0	1	718.99	24.79	0.1	Safe
Vehicle 24	Driver 24	Group 2	Region 1	90	71	2	0	0	0	0	2	525.24	18.11	0.4	Safe
Vehicle 25	Driver 25	Group 4	Region 1	89	76	4	0	0	0	0	4	372.39	15.52	1.1	Safe
Vehicle 26	Driver 26	Group 4	Region 1	89	73	0	0	0	0	0	0	231.09	9.63	0	Safe

Vehicle	Driver	Group	Region	Score	Peak Speed	HB #	HCB #	SA #	Speed #	PSL #	Total Events	Distance Travelled	Average Miles Per Day	Events per 100 Miles	Risk Level
Vehicle 27	Driver 27	Group 4	Region 1	89	71	3	0	1	0	0	4	492.62	18.25	0.8	Safe
Vehicle 28	Driver 28	Group 2	Region 1	89	93	7	0	0	41	7	55	478.21	41.63	11.5	Safe
Vehicle 29	Driver 29	Group 2	Region 1	89	82	1	0	0	0	0	1	437.69	41.63	0.2	Safe
Vehicle 30	Driver 30	Group 2	Region 1	89	75	7	0	0	0	0	7	959.65	30.96	0.7	Safe
Vehicle 31	Driver 31	Group 4	Region 1	89	99	3	0	0	6	4	13	499.27	22.69	2.6	Safe
Vehicle 32	Driver 32	Group 2	Region 1	88	78	7	0	0	1	2	10	753.35	25.11	1.3	Safe
Vehicle 33	Driver 33	Group 4	Region 1	88	65	2	0	0	0	0	2	181.32	7.88	1.1	Safe
Vehicle 34	Driver 34	Group 2	Region 1	88	75	3	0	0	0	0	3	163.61	7.79	1.8	Safe
Vehicle 35	Driver 35	Group 3	Region 1	87	87	13	0	0	8	2	23	1,188.56	39.62	1.9	Safe
Vehicle 36	Driver 36	Group 2	Region 1	87	81	10	0	0	0	1	11	745.83	27.62	1.5	Safe
Vehicle 37	Driver 37	Group 2	Region 1	87	92	0	0	0	33	11	44	554.39	29.18	7.9	Safe
Vehicle 38	Driver 38	Group 2	Region 1	87	82	0	1	0	2	1	4	325.72	25.06	1.2	Safe
Vehicle 39	Driver 39	Group 2	Region 1	87	92	4	0	0	2	3	9	412.16	14.21	2.2	Safe
Vehicle 40	Driver 40	Group 3	Region 1	87	83	8	0	2	1	1	12	796.22	30.62	1.5	Safe
Vehicle 41	Driver 41	Group 2	Region 1	87	85	10	0	0	1	2	13	907.45	30.25	1.4	Safe
Vehicle 42	Driver 42	Group 2	Region 1	87	82	2	0	0	2	1	5	259.55	25.95	1.9	Safe
Vehicle 43	Driver 43	Group 2	Region 1	86	91	9	0	0	1	9	19	1,032.97	41.32	1.8	Safe
Vehicle 44	Driver 44	Group 1	Region 2	86	86	3	0	1	9	7	20	920.56	36.82	2.2	Safe
Vehicle 45	Driver 45	Group 6	Region 1	85	73	3	0	1	0	0	4	268.74	10.34	1.5	Safe
Vehicle 46	Driver 46	Group 2	Region 1	84	97	17	0	1	91	34	143	2,223.39	71.72	6.4	Safe
Vehicle 47	Driver 47	Group 2	Region 1	84	81	17	0	0	5	0	22	1,083.98	45.17	2	Safe
Vehicle 48	Driver 48	Group 4	Region 1	84	101	12	0	0	112	15	139	1,527.7	66.42	9.1	Safe
Vehicle 49	Driver 49	Group 2	Region 1	84	79	14	0	0	0	1	15	758.82	42.16	2	Safe

Vehicle	Driver	Group	Region	Score	Peak Speed	HB #	HCB #	SA #	Speed #	PSL #	Total Events	Distance Travelled	Average Miles Per Day	Events per 100 Miles	Risk Level
Vehicle 50	Driver 50	Group 1	Region 2	84	85	7	1	0	0	1	9	933.05	32.17	1	Safe
Vehicle 51	Driver 51	Group 3	Region 1	84	85	7	0	1	0	0	8	498.65	38.36	1.6	Safe
Vehicle 52	Driver 52	Group 2	Region 1	83	112	16	0	0	81	36	133	1,488.43	48.01	8.9	Safe
Vehicle 53	Driver 53	Group 4	Region 1	82	68	9	0	0	0	0	9	419.18	16.12	2.1	Safe
Vehicle 54	Driver 54	Group 1	Region 2	82	66	7	0	0	0	0	7	254.2	10.59	2.8	Safe
Vehicle 55	Driver 55	Group 1	Region 2	81	87	6	2	0	12	4	24	1,038.25	35.8	2.3	Safe
Vehicle 56	Driver 56	Group 2	Region 1	80	91	5	0	0	10	8	23	425.02	26.56	5.4	Safe
Vehicle 57	Driver 57	Group 2	Region 1	80	86	23	0	0	11	5	39	1,008.36	37.35	3.9	Safe
Vehicle 58	Driver 58	Group 6	Region 1	79	77	10	0	3	0	0	13	267.62	10.29	4.9	Safe
Vehicle 59	Driver 59	Group 2	Region 1	79	76	18	3	0	0	0	21	618.7	23.8	3.4	Safe
Vehicle 60	Driver 60	Group 1	Region 2	79	59	4	0	0	0	0	4	245.81	10.69	1.6	Safe
Vehicle 61	Driver 61	Group 2	Region 1	78	85	7	1	0	7	4	19	464.91	58.11	4.1	Safe
Vehicle 62	Driver 62	Group 2	Region 1	78	92	14	1	0	1	1	17	807.91	42.52	2.1	Safe
Vehicle 63	Driver 63	Group 2	Region 1	75	74	13	2	1	0	1	17	383.82	29.58	4.4	Safe
Vehicle 64	Driver 64	Group 2	Region 1	75	82	20	0	0	0	1	21	473.86	29.58	4.4	Safe
Vehicle 65	Driver 65	Group 2	Region 1	75	100	29	6	16	30	8	89	1,065.71	44.4	8.4	Safe
Vehicle 66	Driver 66	Group 5	Region 1	73	79	40	1	4	0	0	45	743.91	26.57	6	Watchlist
Vehicle 67	Driver 67	Group 2	Region 1	72	75	23	2	0	0	1	26	449.25	34.56	5.8	Watchlist
Vehicle 68	Driver 68	Group 2	Region 1	70	88	43	2	0	32	12	89	1,111.51	41.17	8	Watchlist
Vehicle 69	Driver 69	Group 2	Region 1	63	85	32	3	1	0	0	36	516.05	27.16	7	Risky
Vehicle 70	Driver 70	Group 5	Region 1	58	78	3	0	1	3	0	7	45.05	9.01	15.5	Risky
Total:					112	535	26	34	512	196	1,303	47,743.6	31.17	2.51	